

# How to Play the Games on this CD

## 1. Basketball game:



1- Choose to play alone or with a partner. Then click on where the arrow points to.



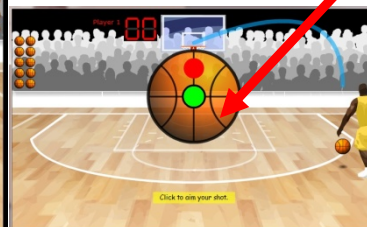
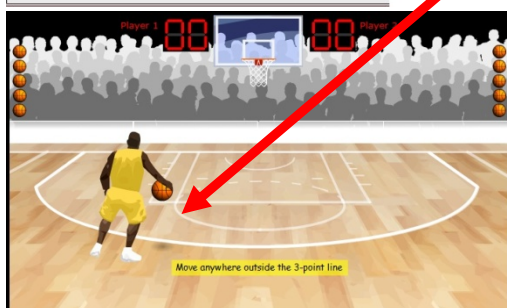
2 - Click on 'play' to begin



3 - Click on the correct answer to the question.

4 - Take a shot

5 - Double click at this point to take the shot and continue



# How to Play the Games on this CD

## 2- En garde game



1- Choose to play alone or with a partner. Click on the area where the arrow points to.

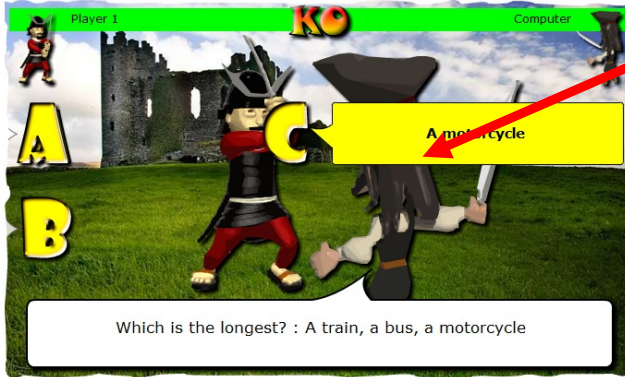


2- Choose a player for the duel



3 – Click to begin game

# How to Play the Games on this CD



4- Choose and click on the correct answer by moving the cursor close to the choices against each letter.

### 3- Fling the teacher game



1- Click 'play' to start.



2 - Click here

# How to Play the Games on this CD

Question by www.math4children.com

How many sides does a triangle have ?

A 2 sides  
B 3 sides  
C 5 sides  
D 4 sides

To fling the teacher, you have to build a trebuchet by answering 15 questions correctly.

Ask Vote -2 Take

1  
2  
3  
4  
5  
6  
7  
8  
9  
10  
11  
12  
13  
14  
15

Choose the correct answer by clicking on it.

## 4 – Football

math4children.com

**PENALTY SHOOTOUT**

Missing number  
by www.math4children.com

Created on Sunday 7 March 2010  
10 multiple-choice questions chosen from a bank of 10

One player Two players Quit

Content Generator .net


Version 8 School site licence

1 – Choose to play alone or with a partner


math4children.com

Player 1 options

Your name:

Selected keeper:  Bill Gates

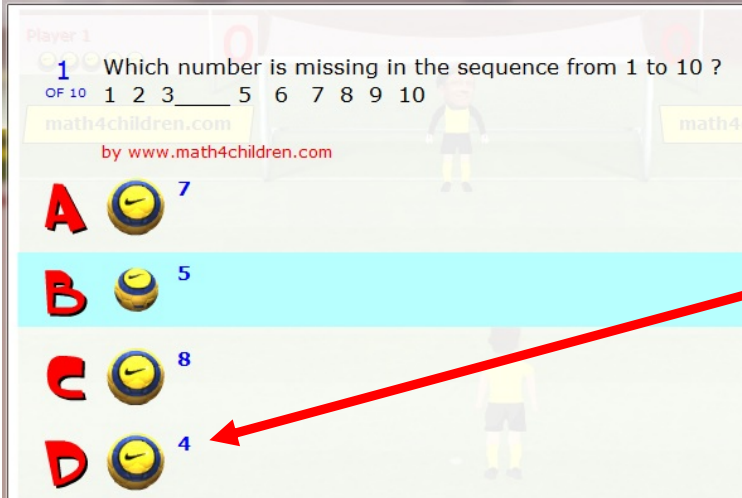
Keeper skill:   
Random!   
Top quality   
Good   
Average   
Simply awful

Player 1 team colour: 

Continue

2 - Click to continue

# How to Play the Games on this CD



3 - Click on the right choice

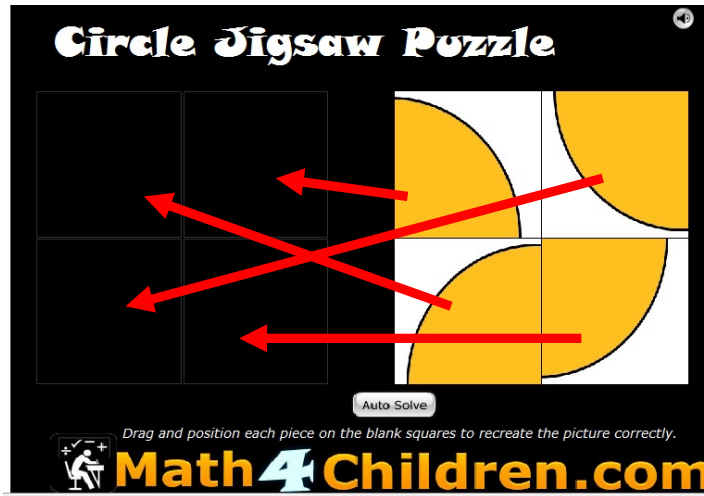
## 5 – Memory game :

This game is a matching exercise in which you are expected to click here and find the corresponding match by clicking here.



# How to Play the Games on this CD

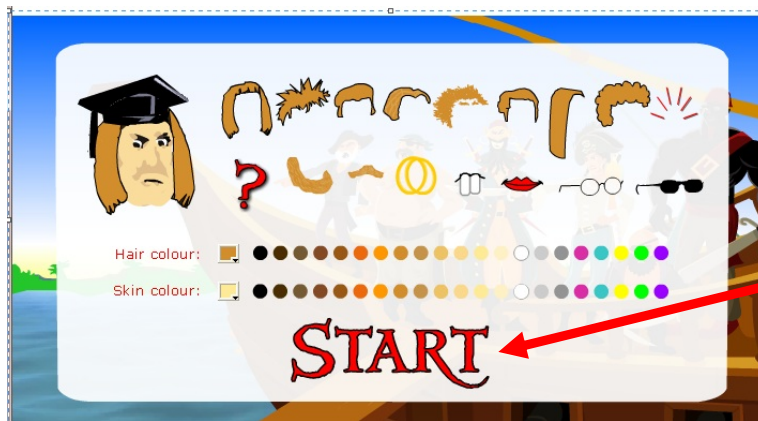
6 – **Jigsaw puzzle:** This is a game in which you are expected to form a shape from the pieces of the puzzle by dragging and dropping.



7- **Walk the plank game:**

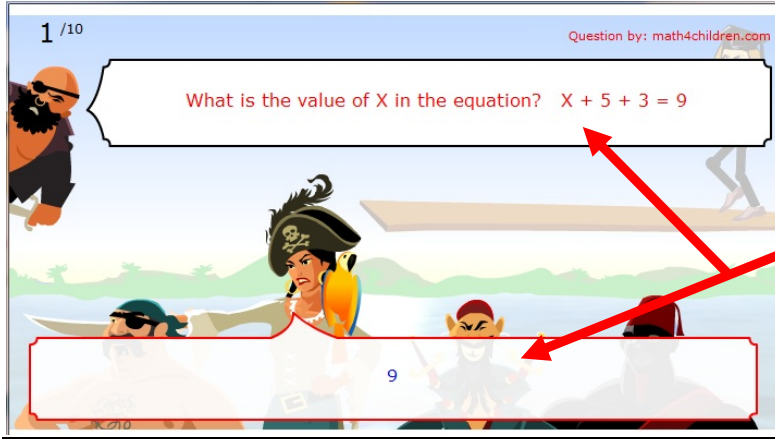


1 - Click on the game to start



2- Click here to 'start'

# How to Play the Games on this CD



**3 - Read the question above and scroll the cursor over the characters below to view different choices. Click on the correct answer when it pops up.**